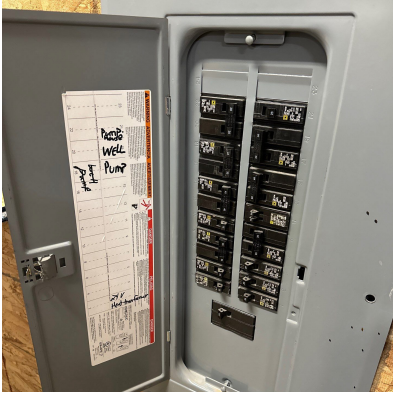


SERVICING PRESSURE SWITCHES

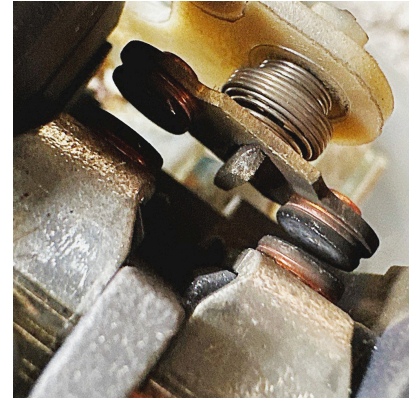
Shut Pump Off



Remove Cover



Inspect Switch



Check Factory
PSI Rating



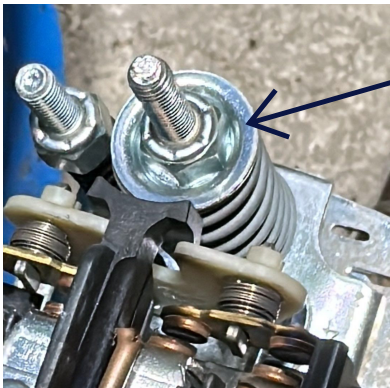
Wire Switch
Power-In | Pump-Out



Power On Pump
Check On/Off Settings



Adjust On/Off Setting



Turn Middle Nut
Clockwise to Increase
On/Off Pressure Set Points

Turn Side Nut
Clockwise to Increase
Shut Off Pressure Set Point.

Tip: Most switches are a 20-psi spread. You can increase or decrease the spread as needed.

Adjust Off Setting



Question?

Call /Text: 406-800-1175
www.altowellandpump.com

