

SERVICING PRESSURE TANKS

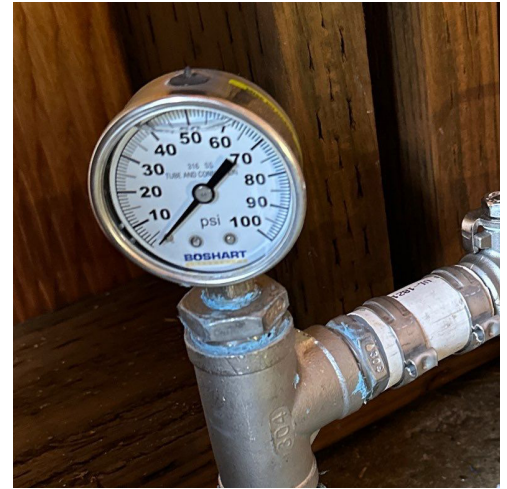
Shut Pump Off



**Drain Water &
Pressure from Tank**



**Verify Pressure
Gauge is at 0-psi**



**Push on Tank to
Verify it's Empty**



**Knock to See if
it is Hollow**



**Adjust Tank psi to
2-psi Less Cut-In***



***Note: VFD/Constant Pressure systems are typically set at
70% of the systems Set Pressure Point.**

Question?

Call /Text: 406-800-1175
www.altowellandpump.com

Alto 
Well & Pump